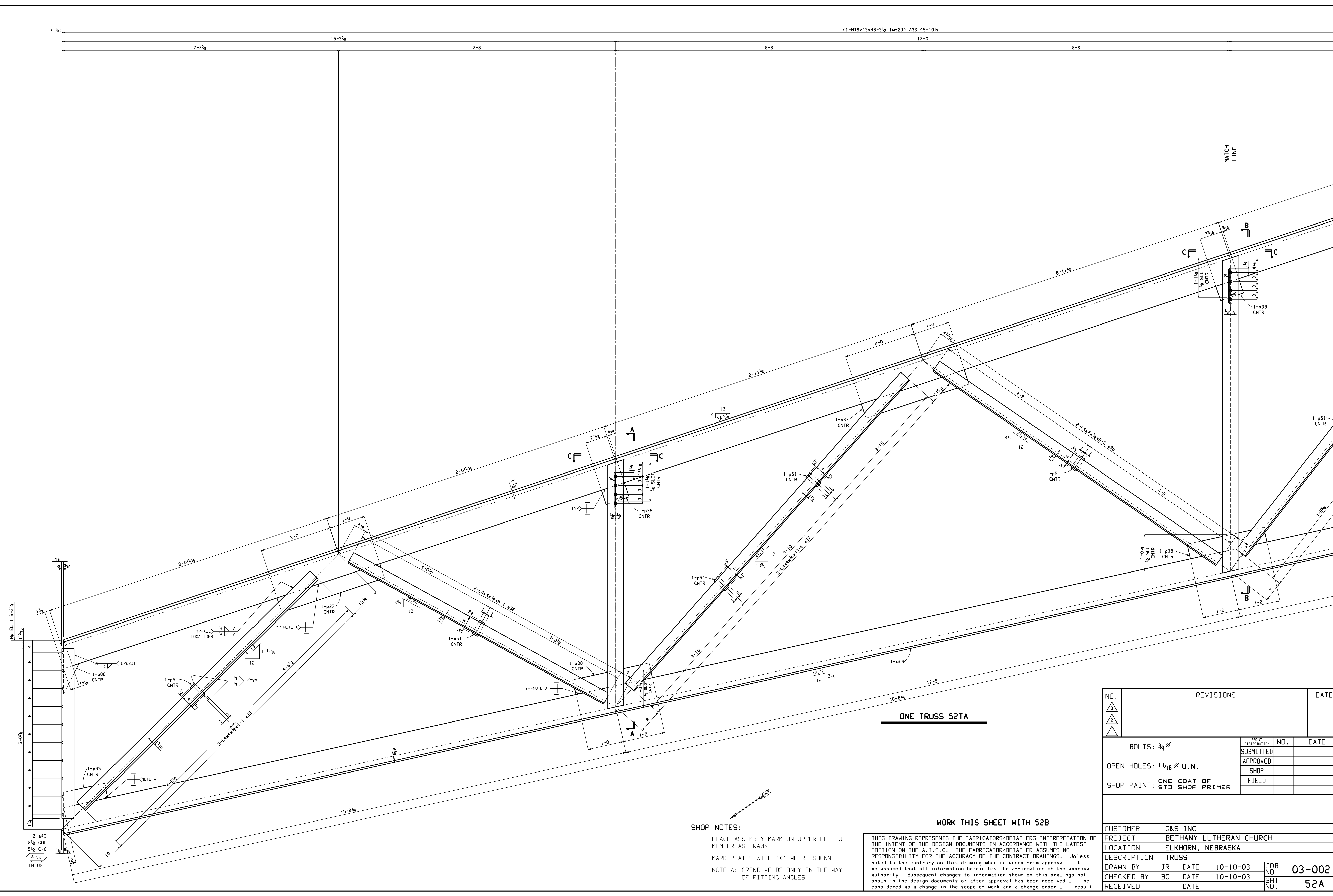


Jan 27 2004 12:55:32 PM
 MNH_GAULEDETAILING.COM



ONE TRUSS 52TA

WORK THIS SHEET WITH 52B

SHOP NOTES:
 PLACE ASSEMBLY MARK ON UPPER LEFT OF MEMBER AS DRAWN
 MARK PLATES WITH 'X' WHERE SHOWN
 NOTE A: GRIND WELDS ONLY IN THE WAY OF FITTING ANGLES

THIS DRAWING REPRESENTS THE FABRICATORS/DETAILERS INTERPRETATION OF THE INTENT OF THE DESIGN DOCUMENTS IN ACCORDANCE WITH THE LATEST EDITION ON THE A.I.S.C. THE FABRICATOR/DETAILER ASSUMES NO RESPONSIBILITY FOR THE ACCURACY OF THE CONTRACT DRAWINGS. Unless noted to the contrary on this drawing when returned from approval. It will be assumed that all information herein has the affirmation of the approval authority. Subsequent changes to information shown on this drawings not shown in the design documents or after approval has been received will be considered as a change in the scope of work and a change order will result.

NO.	REVISIONS	DATE

BOLTS: 3/4"	NO.	DATE

OPEN HOLES: 1 3/16" U.N.	NO.	DATE

SHOP PAINT: ONE COAT OF STD SHOP PRIMER	NO.	DATE

CUSTOMER	G&S INC
PROJECT	BETHANY LUTHERAN CHURCH
LOCATION	ELKHORN, NEBRASKA
DESCRIPTION	TRUSS
DRAWN BY	JR
DATE	10-10-03
CHECKED BY	BC
DATE	10-10-03
RECEIVED	
DATE	

JOB NO.	03-0021
SHT NO.	52A

